

Catalogue





ABOUT US

Heuvelmans Interiors fine lighting and furniture, is a family business renowned worldwide for its high level artistic reproductions, presents it's exclusive collections made by artisans using hand cut crystals, semi-precious stones such as lapis lazuli, malachite and amethyst, enriched with hand chiseled 24K gilt bronze plated bronzes.

The great tradition of artistic craftsmanship and a high-class designer name, conjugating elegance of detail with originality in the solutions adopted, express Heuvelmans Interiors passion and creativity and their specifically taste for a very exclusive interior decoration.

The design, the workmanship, the finishing touches and the materials all contribute in making Heuvelmans Interiors collections unique pieces of great value, created for homes where beauty is not only appearance, but an original search for style.

INDEX

BRONZE AND CRYSTAL	1
BRONZES.....	2
CANDELABRAS	3
CHANDELIERS.....	4
CLOCKS	5
COUPES	6
FIREPLACES	7
FLOWERBOX.....	8
LAMPS	9
TABLES	10
VASES.....	11
WALL SCONCES	12

CRYSTAL



REF.CRYST.1601

DIMENSIONS
44 X 60 CM

MATERIAL
CRYSTAL



REF.CRYST.1602

DIMENSIONS
38 X 50 CM

MATERIAL
CRYSTAL

BRONZES



REF.BRONZE.201

HEIGHT
90 CM

MATERIAL
MALACHITE



REF.BRONZE.202

DIMENSIONS
65 X 55 CM

MATERIAL
MARBLE

BRONZES



REF.BRONZE.203

HEIGHT
180 CM

MATERIAL
BRONZE

The most celebrated sculpture by Giambologna is the Mercury, known in four versions whose chronology is uncertain. His first design, a heavy wingless figure, is preserved in a model in Bologna. When Giambologna returned to Florence, he referred to his earlier work in a second version, a flying Mercury, now lost or identical to one in Vienna. This bronze was sent by Cosimo as a diplomatic gift to the Holy Roman Emperor Maximilian II, when they were negotiating the marriage of Maximilian's sister Giovanna to Francesco de' Medici. The messenger god was Maximilian's protector and the pose was based on a medal of Maximilian by Leone Leoni (1551).

The fourth, a flying variant in Florence was completed by 1580, when it became a fountain figure at the Villa Medici, Rome. Mercury balances on a bronze column of air issuing from the mouth of Zephyr, over which flowed water, increasing the illusion that he was floating. The work shows a study of Verrocchio's Putto and Dolphin and Rusitici's Mercury, both for the Medici and is indebted to the Mercury on the base of Cellini's Perseus but has more dynamism.

The god assumes an arabesque, balanced precariously on his toes, and points upward to Jupiter. It is Mannerist in that it can be appreciated from all angles and is elongated and elegant; yet these features contrast with its amazing physicality and an evident study of weights and balances. The preciousness of "Maniera" is blended with what became Baroque illusionism and the freedom derived from wax.



CANDELABRAS



REF.CAND.1101

HEIGHT
220 CM

MATERIAL
GILT BRONZE

**24 KT GILT BRONZE PLATED BRONZE PALATIAL
TORCHERES WITH PUTTI**

Similar pair at 5 star hotel "King George Palace Hotel" Athens bought by owner Kalkanis to expand his collection. The King George Palace Hotel, located in the heart of Athens on the Syntagma Consitution historical square, has attracted some of the world's most prominent figures.

Its owner Kalkanis amassed a fantastic collection of works of art from all over the world to decorate the rooms of the hotel.

These included, among others, the present magnificent pair of figural candelabra, as well as Aubusson tapestries of the 17th century, Old Master paintings, Japanese porcelains of the 17th century, a collection of sculptures from the 18th and 19th centuries, and Louis XVI boisserie panels.

Amongst the many guests of the hotel and family friends were the kings of Greece, the president John Fitzgerald Kennedy and his wife, Maria Callas, Prince Rainier and Princess Grace of Monaco, Juan Carlos of Spain, Simeon of Bulgaria and various other crowned heads of Europe, India and the Emirates.



REF.CAND.1133

HEIGHT
220 CM

MATERIAL
MALACHITE AND AMETHYST

24 KT GILT BRONZE PLATED BRONZE MONUMENTAL CANDELABRA

12 kt gilt bronze plated bronze monumental candelabra with base and middle part in semi precious stone, style Empire after Pierre-Phillipe Thomire

Pierre-Philippe Thomire (1751 — 1843) a French sculptor, was the most prominent bronzier, or producer of ornamental patinated and gilt-bronze objects and furniture mounts of the First French Empire.

CANDELABRAS



REF.CAND.1101

HEIGHT
220 CM

MATERIAL
BRONZE



REF.CAND.1102

HEIGHT
42 CM

MATERIAL
BRONZE



REF.CAND.1103

HEIGHT
132 CM

MATERIAL
MALACHITE



REF.CAND.1104

HEIGHT
65 CM

MATERIAL
MARBLE



REF.CAND.1107

HEIGHT
112 CM

MATERIAL
MARBLE



REF.CAND.1108

HEIGHT
65 CM

MATERIAL
MARBLE



REF.CAND.1112

HEIGHT	MATERIAL
72 CM	MALACHITE



REF.CAND.1113

HEIGHT	MATERIAL
112 CM	BRONZE



REF.CAND.1114

HEIGHT	MATERIAL
88 CM	MARBLE



REF.CAND.1119

HEIGHT	MATERIAL
120 CM	MARBLE



REF.CAND.1119

HEIGHT	MATERIAL
120 CM	BRONZE



REF.CAND.1120

HEIGHT	MATERIAL
85 CM	BRONZE

CANDELABRAS



REF.CAND.1122

HEIGHT
135 CM

MATERIAL
RED MARBLE



REF.CAND.1126

HEIGHT
58 CM

MATERIAL
PORPHYRY



REF.CAND.1129

HEIGHT
103 CM

MATERIAL
BRONZE



REF.CAND.1130

HEIGHT
65 CM

MATERIAL
MARBLE



REF.CAND.1131

HEIGHT
42 CM

MATERIAL
RED MARBLE



REF.CAND.1132

HEIGHT
120 CM

MATERIAL
BRONZE



REF.CAND.1132

HEIGHT 120 CM
MATERIAL MALACHITE



REF.CAND.1132

HEIGHT 120 CM
MATERIAL LAPIS



REF.CAND.1134

HEIGHT 51 CM
MATERIAL BRONZE



REF.CAND.1135

HEIGHT 100 CM
MATERIAL BRONZE



REF.CAND.1136

HEIGHT 55 CM
MATERIAL MARBLE



REF.CAND.1137

HEIGHT 108 CM
MATERIAL MALACHITE

CANDELABRAS



REF.CAND.1138

HEIGHT
51 CM

MATERIAL
BRONZE



REF.CAND.1139

HEIGHT
120 CM

MATERIAL
PORPHYRY



REF.CAND.1140

HEIGHT
47 CM

MATERIAL
BRONZE



REF.CAND.1141

HEIGHT
53 CM

MATERIAL
BRONZE



REF.CAND.1142

HEIGHT
53 CM

MATERIAL
BRONZE



REF.CAND.1143

HEIGHT
65 X 34 CM

MATERIAL
BRONZE



Presidential Suite hotel Le Negresco Nice France

CANDELABRAS



HOTEL LE NEGRESKO LOBBY NICE FRANCE



Salon Alechinsky French Gouvernement
Paris France



salon des Marechaux bureau du Ministre
French Gouvernement Paris France

CHANDELIERS



REF.CHAND.901

DIMENSIONS
110 X 60 CM

MATERIAL
BRONZE



REF.CHAND.902

DIMENSIONS

MATERIAL
BRONZE



REF.CHAND.903A

HEIGHT
130 X 70 CM

MATERIAL
BRONZE



REF.CHAND.903B

DIMENSIONS
130 X 70 CM

MATERIAL
BRONZE



REF.CHAND.904

DIMENSIONS
130 X 90 CM

MATERIAL
BRONZE



REF.CHAND.906

HEIGHT
130 X 100 CM

MATERIAL
BRONZE



REF.CHAND.907

HEIGHT
150 X 97 CM

MATERIAL
BRONZE



REF.CHAND.908

DIMENSIONS
95 X 80 CM

MATERIAL
CRYSTAL

CHANDELIERS



REF.CHAND.909

HEIGHT
37 X 40 CM

MATERIAL
CRYSTAL



REF.CHAND.910

HEIGHT

MATERIAL
BRONZE



REF.CHAND.911

DIMENSIONS
100 X 86 CM

MATERIAL
CRYSTAL



REF.CHAND.912

DIMENSIONS
94 X 82 CM

MATERIAL
BRONZE



Hollywood movie The Hunger Games



Calvin Harris Thinking about you

CHANDELIERS



REF.CHAND.903

DIMENSIONS
130 X 70 CM

MATERIAL
BRONZE



REF.CHAND.914

HEIGHT
140 X 120 CM

MATERIAL
CRYSTAL

CHANDELIERS



Chateau Le Pontot Vezelay France



SHANGRI-LA LOBBY PARIS FRANCE

CLOCKS



REF.PEND.1201

HEIGHT
46 X 36 X 16 CM

MATERIAL
BRONZE



REF.PEND.1202

DIMENSIONS
37 X 31 X 11 CM

MATERIAL
BRONZE



REF.PEND.1203

HEIGHT
27 X 17 CM

MATERIAL
BRONZE



REF.PEND.1204

DIMENSIONS
37 X 22 X 11 CM

MATERIAL
BRONZE



REF.PEND.1205

HEIGHT
46 X 36 X 16 CM

MATERIAL
BRONZE



REF.PEND.1206

DIMENSIONS
40 X 37 X 10 CM

MATERIAL
BRONZE



REF.PEND.1208

DIMENSIONS
60 X 39 X 24 CM

MATERIAL
BRONZE



REF.PEND.1227

HEIGHT
43 CM

MATERIAL
BRONZE

CLOCKS



REF.PEND.1211

HEIGHT
60 x 78 x 20 CM

MATERIAL
MALACHITE



REF.PEND.1212

DIMENSIONS
70 x 78 x 20 CM

MATERIAL
BRONZE



REF.PEND.1212

DIMENSIONS
70 x 78 x 20 CM

MATERIAL
MALACHITE



REF.PEND.1213

DIMENSIONS
42 x 44 x 14 CM

MATERIAL
BRONZE



REF.PEND.1215

HEIGHT
60 X 72 X 20 CM

MATERIAL
MALACHITE



REF.PEND.1216

HEIGHT
60 X 72 X 20 CM

MATERIAL
MALACHITE



REF.PEND.1217

HEIGHT
80 CM

MATERIAL
BRONZE



REF.PEND.1219

HEIGHT

MATERIAL
BRONZE

CLOCKS



REF.PEND.1220

HEIGHT
50 X 48 X 15 CM

MATERIAL
BRONZE



REF.PEND.1221

HEIGHT
49 X 59 X 17 CM

MATERIAL
BRONZE



REF.PEND.1223

DIMENSIONS
53 X 43 X 15 CM

MATERIAL
BRONZE



REF.PEND.1224

DIMENSIONS
55 X 34 X 21 CM

MATERIAL
BRONZE



REF.PEND.1225

DIMENSIONS
57 X 50 X 27 CM

MATERIAL
BRONZE



REF.PEND.1226

DIMENSIONS
50 X 40 X 16 CM

MATERIAL
BRONZE



CLOCKS



REF.PEND.1209

HEIGHT : 46 CM
WIDTH: 36 CM
DEPTH: 16 CM
MATERIAL: GILT BRONZE

CLOCK BY PIERRE-PHILIPPE THOMIRE, EMPIRE STYLE (1800-1830)

With two winged Nike figures holding aloft a pierced oval basket, each resting on a foliate-wrapped sphere, above a stepped square plinth centred by fruit-filled classical urns and joined by a foliate-cast shaped stretcher with floral medallion, each plinth signed 'THOMIRE A PARIS'

By tradition given by Emperor Napoleon as part of a 75-piece suite of table decoration to Prince Clemens von Metternich (1773-1859), by whom most probably given to ministerial counsel Baron Paul Anton von Handel. By descent to the Counts Pachtá

COUPES



REF.COUP.501

HEIGHT
70 CM

MATERIAL
BRONZE



REF.COUP.501

HEIGHT
70 CM

MATERIAL
BRONZE



REF.COUP.502

HEIGHT
62 CM

MATERIAL
BRONZE



REF.COUP.502

HEIGHT
62 CM

MATERIAL
LAPIS LAZULI

COUPES



REF.COUP.502

HEIGHT
62 CM

MATERIAL
MALACHITE



REF.COUP.503

HEIGHT
78 CM

MATERIAL
MALACHITE



REF.COUP.503

HEIGHT
78 CM

MATERIAL
GREEN MARBLE



REF.COUP.503

DIMENSIONS
78 X 20 X 25 CM

MATERIAL
LAPIS LAZULI



REF.COUP.504

HEIGHT
36 CM

MATERIAL
LAPIS LAZULI



REF.COUP.506

HEIGHT
32 CM

MATERIAL
BRONZE



REF.COUP.601

HEIGHT
46 CM

MATERIAL
RED MARBLE



REF.COUP.602

HEIGHT
68 CM

MATERIAL
GREEN MARBLE

COUPES



REF.COUP.602

HEIGHT
68 CM

MATERIAL
MALACHITE



REF.COUP.604

HEIGHT
64 CM

MATERIAL
MALACHITE





REF.COUP. 503

HEIGHT : 78 CM
MATERIAL: MALACHITE

The design and form of these imposing pair of covered vases combine a number of elements that are typical of the work of Claude Galle (1759-1815), who was one of Napoleon's favourite bronziers. Firstly one can cite the similarity between the rams' head handles that also appear on a slightly earlier Galle vase of circa 1800, examples of which are in the Villa Hardt, Eltville and Ludwigsburg Castle

Secondly, like the latter, the present vases feature on the main body figures associated with Bacchus, god of wine and thirdly they, like the latter as well as other Galle bronzes are decorated with intricate pierced palmette and anthemion decorations. The dancing maenads can also be compared with those appearing on an unattributed Paris made covered vase of circa 1815

FIREPLACES



REF.FIRE.1501

HEIGHT
126 X 180 X 47 CM

MATERIAL
MALACHITE



REF.FIRE.1502

HEIGHT
129 X 207 X 47 CM

MATERIAL
MARBLE

FLOWERBOX

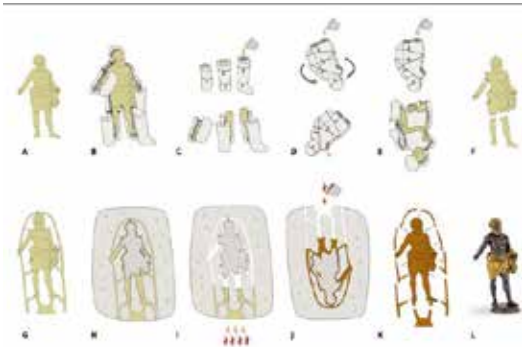


REF.JARD.401

HEIGHT
90 CM

MATERIAL
MALACHITE

THE LOST WAX METHOD



The entire process starts at foundry. There are two methods to prepare a piece, by sand and the lost wax method.

Heuvelmans Interiors only works with the lost wax method, this is the most complicated method but the result is outstanding!!!

This process takes a couple of days and starts with a silicone form, which is filled by hot wax. When the wax sets the piece is taken out, and it's then set on a special stand. This stand will be treated by ceramics. Forms prepared in such way are put in special basins, and then the wax is melted away. This is how the ceramics forms are prepared, which are then heated in special ovens. Then they are filled with brass, prepared daily according to special proportions.

LAMPS



REF.LAMP.1104

HEIGHT
103 CM

MATERIAL
BRONZE



REF.LAMP.605

HEIGHT
86 CM

MATERIAL
BLACK MARBLE



REF.LAMP.1120

HEIGHT
85 CM

MATERIAL
BRONZE



REF.LAMP.1130

HEIGHT
65 CM

MATERIAL
BRONZE

LAMPS



REF.LAMP.301

HEIGHT

MATERIAL
CRYSTAL



REF.LAMP.503

HEIGHT

MATERIAL
MARBLE



REF.LAMP.601

DIMENSIONS
85 X 43 CM

MATERIAL
CREME MARFIL



REF.LAMP.604

HEIGHT
105 CM

MATERIAL
MARBLE



REF.LAMP.1112

HEIGHT : 72 CM

MATERIAL: LAPIS LAZULI

Gilt bronze lamp with base in semi precious stone Lapis Lazuli lamp shade by Anne Sokolsky style Empire

Inspired on Ref.CAND.1112

TABLES



REF.TABLE.701

DIMENSIONS
90 X 109 CM

MATERIAL
AMETHYST



REF.TABLE.701

DIMENSIONS
90 X 109 CM

MATERIAL
LAPIS LAZULI



REF.TABLE.701

DIMENSIONS
90 X 109 CM

MATERIAL
MARBLE



REF.TABLE.701

DIMENSIONS
90 X 109 CM

MATERIAL
ONYX



REF.TABLE.701

DIMENSIONS
90 X 109 CM

MATERIAL
MALACHITE



REF.TABLE.701

DIMENSIONS
90 X 109 CM

MATERIAL
MALACHITE



REF.TABLE.701

DIMENSIONS
90 X 196 CM

MATERIAL
MALACHITE



REF.TABLE.701

DIMENSIONS
90 X 109 CM

MATERIAL
MALACHITE

TABLES



REF.TABLE.702

DIMENSIONS
87 X 186 X 110 CM

MATERIAL
MALACHITE



REF.TABLE.702

DIMENSIONS
87 X 186 X 110 CM

MATERIAL
MALACHITE



REF.TABLE.703

DIMENSIONS
78 X 70 CM

MATERIAL
BRONZE



REF.TABLE.704

DIMENSIONS
90 X 109 CM

MATERIAL
MALACHITE



REF.TABLE.706

DIMENSIONS
83 X 40 X 62 CM

MATERIAL
MARBLE



REF.TABLE.707

DIMENSIONS
80 X 50 CM

MATERIAL
MALACHITE



REF.TABLE.707

DIMENSIONS
80 X 50 CM

MATERIAL
MALACHITE



REF.TABLE.708

DIMENSIONS
90 X 109 CM

MATERIAL
MALACHITE



REF.TABLE.705

DIMENSIONS
100 x 140 CM

MATERIAL



REF.TABLE.709

HEIGHT
80 x 64 x 150 CM

MATERIAL
BRONZE



Private Residence Dallas United States

OUR TECHNIQUES



NITRATE GILDING WITH MERCURY 24CARAT Gilt bronze

The pieces are degreased and cleaned off either chemically or by electrolyse, the gilt bronze is fixed to the piece by placing it twice inside of the electrolytic solution. After the first charge of gilt bronze, the pieces are smoothed out with the brush and then are recharged a second time. Between the two charges the pieces are placed inside of a mercurybased rinse, the piece will then go through the mercury solution several times; the gilt bronze plating will become flat and offwhitish. Then it is equalized by a metallic brush and the colour is brought out by the heat of the oven (150 degrees Celsius).

The burnishing and patina processes remain the same as for the mercury gilding. However, this beautiful type of gilding is less resistant than that of the MERCURY GILDING; the gilt bronze is applied to the metal but is not encrusted as is the case in MERCURY GILDING. Everything is dependent on the immersion time and the content of the gilt bronze in the electrolyte.

VASES



REF.VASE.803

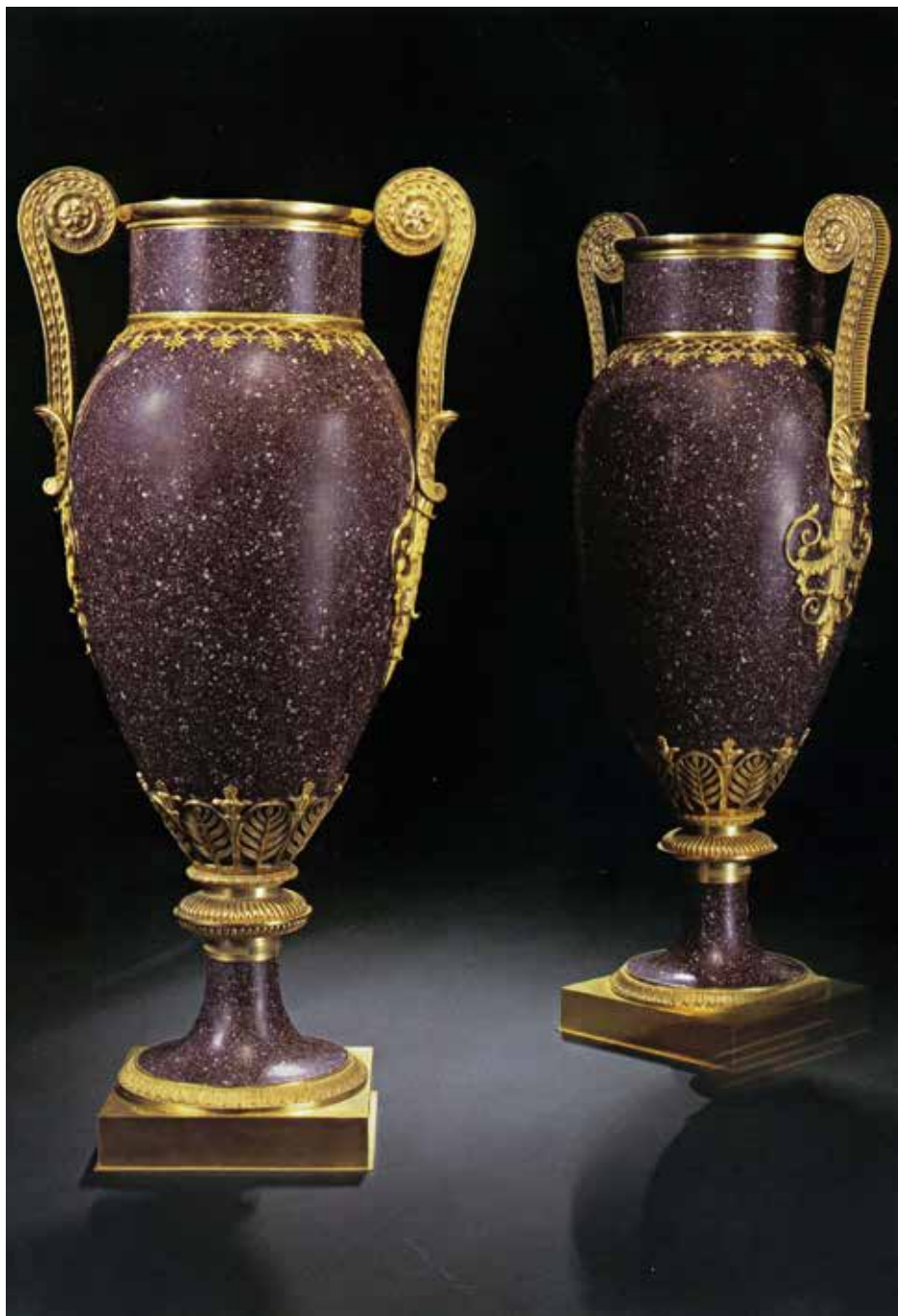
HEIGHT : 97 CM
DIAMETER: 56 CM
MATERIAL: LAPIS LAZULI

AN IMPRESSIVE PAIR OF URNS VENEERED IN LAPIS LAZULI

In the neo-classical style, the urns made of composite and veneered in Lapis Lazuli, flanked by mask-shaped handles, centered by a classical medallion and joined by floral and berriedswags.

Similar pair found at Mansion Sylvester Stallone, Miami Beach and at the Palacio Ferreyra, Argentina

VASES



REF.VASE.806

HEIGHT : 108 CM

DIAMETER: /

MATERIAL: PORPHYRY

24 KT GILT BRONZE PLATED URNS WITH SEMIPRECIOUS STONE EGYPTIAN PORPHYRY

Vases at Malachite Room, Winter Palace Hermitage museum, Russia
(see picture above)

Vases available in other semiprecious stones or marble at customer's choice



REF.VASE.801

DIMENSIONS
60 X 43 CM

MATERIAL
BRONZE



REF.VASE.802

DIMENSIONS
94 X 130 CM

MATERIAL
MALACHITE



REF.VASE.809

HEIGHT
63 X 46 X 76 CM

MATERIAL
BRONZE



REF.VASE.803

HEIGHT
97 CM

MATERIAL
LAPIS LAZULI

VASES



REF.VASE.803

HEIGHT
97 CM

MATERIAL
BRONZE



REF.VASE.803

HEIGHT
97 CM

MATERIAL
MALACHITE



REF.VASE.804

DIMENSIONS
85 X 35 X 26 CM

MATERIAL
BRONZE



REF.VASE.804

HEIGHT
85 X 35 X 26 CM

MATERIAL
MALACHITE



REF.VASE.806

HEIGHT
108 CM

MATERIAL
PORPHYRY



REF.VASE.807

HEIGHT
90 X 42 CM

MATERIAL
MARBLE



REF.VASE.808

HEIGHT
70 CM

MATERIAL
RED MARBLE



REF.VASE.809

HEIGHT

MATERIAL
BRONZE

VASES



REF.VASE.802

HEIGHT : 94 CM
DIAMETER: 130 CM
MATERIAL: MALACHITE

24KT GOLD PLATED BOWL WITH SEMI PRECIOUS STONE MALACHITE MALACHITE

was inspired on a study of Kolyvan Lapidary Works.

Russia, 1809-1811

Vase available in other semi-precious stones or marble at customer's choice.



Private Residence Houston United States

WALL SCONCES



REF.APPL.101

HEIGHT : 70 CM
DIAMETER: 28 CM

LAMPS: 4

MATERIAL: GILT BRONZE

GILT BRONZE WALL SCONCES AFTER ANDRÉ ANTOINE RAVRIO

This pair of wall sconces is inspired on a model delivered by "Thomire-Dutermie et Cie" for the "chambre à coucher de l'Empereur" and for "le grand salon du Petit appartement de l'Impératrice" at the Fontainebleau Palace on the 18th of November 1809.



REF.APPL.102

HEIGHT
108 CM

MATERIAL
BRONZE



REF.APPL.103

HEIGHT
60 CM

MATERIAL
BRONZE



REF.APPL.104

HEIGHT
80 CM

MATERIAL
BRONZE



REF.APPL.105

DIMENSIONS
104 X 39 X 30

MATERIAL
BRONZE



REF.APPL.105

HEIGHT
104 X 39 X 30

MATERIAL
BRONZE



REF.APPL.106

HEIGHT
65 CM

MATERIAL
BRONZE

WALL SCONCES



REF.APPL.107

HEIGHT
35 CM

MATERIAL
BRONZE



REF.APPL.107

HEIGHT
35 CM

MATERIAL
BRONZE



REF.APPL.108

HEIGHT
112 CM

MATERIAL
BRONZE



REF.APPL.109

HEIGHT
33 X 24 X 14

MATERIAL
BRONZE



REF.APPL.109

HEIGHT
33 X 24 X 14

MATERIAL
BRONZE



REF.APPL.112

HEIGHT
40 CM

MATERIAL
BRONZE



REF.APPL.115

DIMENSIONS	MATERIAL
20 X 28 CM	BRONZE



REF.APPL.124

DIMENSIONS	MATERIAL
33 X 24 CM	BRONZE



REF.APPL.125

DIMENSIONS	MATERIAL
33 X 24 CM	BRONZE



REF.APPL.126

HEIGHT	MATERIAL
30 X 22 X 15	BRONZE



REF.APPL.127

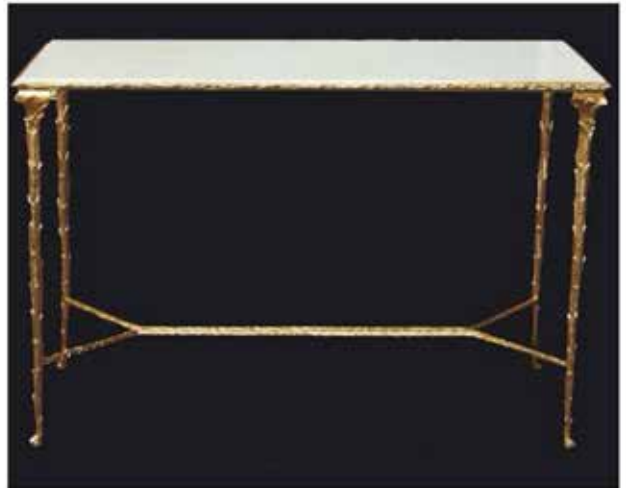
HEIGHT	MATERIAL
30 X 22 X 20	BRONZE



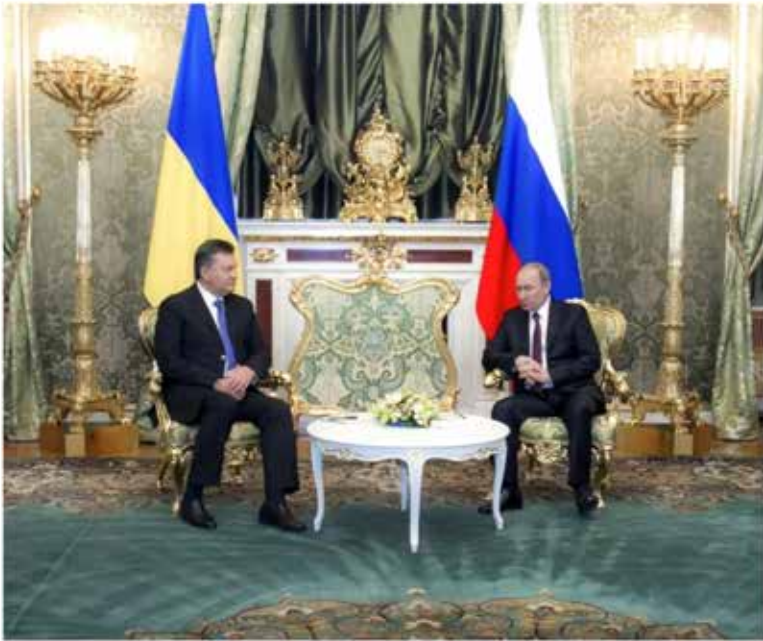
REF.APPL.128

DIMENSIONS	MATERIAL
68 X 59 X 50	BRONZE

PROJECTS



Presidential Suite Hotel Des Bergues Geneva Switzerland



Trade Agreement Russia-Ukraine Moscow Russia

PROJECTS



Salon Alechinsky French Gouvernement Paris France



Presidential Suite Four Seasons Florence Italy

TERMS & CONDITIONS

Order: Every order will be accepted without reserve of our general sale conditions, unless formal and deliberate derogation on our part. After having sent confirmation on our part, the order can't be canceled. This confirmation applies as a commercial contract taking in the client's pure and simple adhesion. Exclusive sale to registered professionals in their countries and able to furnish their registration number. For members of the E.C, the TVA or VAT number is obligatory. The opening of an account requires a K-BIS extract and a bank RIB (slip giving official details of a bank account).

Fabrication: Our products being hand-crafted, they may show some variations or modifications. We reserve the right to modify characteristics of our products if we feel those changes are necessary. In case of complaint about the quality, the quantity, or the nature of the products delivered, this one should reach the seller within the eight days of receipt of the product and by registered mail. No merchandise return will be done without prior agreement from the seller and this within a period not exceeding one month after the shipping date. In case of return without the consent of the vendor, the merchandises will be kept at the disposal of the buyer. Storage cost of 0.60% of the sum exclusive of tax will be charged for per each month of storage. The guaranty of our products is of express agreement limited to replacing defectuous products known by our company, without any compensation nor damages and interest of any kind. The guaranty of our products is valid with our workshops of herblay. All expenses

Delivery delays: Delays of fabrication are only given as guideline. In no cases, will delays in fabrication give cause to the refusal and/or cancellation of all or part of the order, nor justify the payment of damages and interest or penalties to the benefit of the buyer.

Price and conditions of payment: Prices recorded on our order confirmation prevail over any other conditions from our clients, if need be, or prior price offers. Our prices are established leaving warehouse, save taxes, transportation and extra packaging cost. Unless contrary stipulated, the invoice is payable in cash at removal. NO merchandise will leave our workshops without having been paid in full. Each delivery will include a bill given to the organization.

For the Europe EXPORT clients: Account payment of 50% at order. The balance should be paid before removal. Method of payment: bank transfer before merchandise departure. Intra community number (TVA) and exit certificate is mandatory.

For the international EXPORT clients: Account payment of 50% at order. The balance should be paid before removal. Method of payment: bank transfer or cheque coming from responsible transit point paid by the client before departure of merchandise. Any lateness will justly lead, after formal notice, to payment of penalties at the legal rate applicable to commercial matters increased by 50%.

By formal agreement and unless requested report on time and agreed by us, payment failure of our furniture at due date or by default of the buyer will lead to:

1. The resolution by right of all the sales concluded and not settled or the payment pro forma before delivery, of possible orders or the remainder to be delivered;
2. The immediate payment of the total sum due no matter what the mode of payment planned (draft accepted or not) and due date;
3. Recovery by legal ways;
4. Payment, by ways of damages and interests and of penal clause, an indemnity equal to 15% of all sums due with a minimum tax of 45€, in addition to late interest and eventual legal expenses.

Reserve clause of ownership: Merchandises stay our property until full payment of the bill. Any agreement contrary to the general sale conditions of our clients is invalid and without value.

Transport: Packaging and transport charges, as well as all customs formalities are the responsibility of the client. All the merchandises travel at the addressee's own risk. As our packaging receive the best of care, you should verify the condition of the merchandises at their arrival, in presence of the driver. In case of damage, it is up to the buyer, to indicate all the detailed reservations on the driver's dispatch sheet, confirmed by registered mail within 48 hours and to lodge a possible appeal against them.

Contract and estimate: When an estimate is established by us, it constitutes particular conditions bringing modifications or completing the present general conditions. In case of an order received by the buyer, this one will not be considered as accepted by us unless by written confirmation on our part. It is this acceptance, in this case, that will constitute the particular conditions. Studies, plans and drawings as well as any other documents given or sent by ourselves will remain our property, they cannot, in any case, be transmitted to a third party whatever the buyer's reasons.

Attribution of jurisdiction: In case of contention, whatever the reason may be, all the differences will be submitted to the commerce court in the jurisdiction where the buyer's head office is located "Handelsrechtbank Antwerpen", only competent jurisdiction in case of appeal of the guaranty or instance of refusal, notwithstanding all contrary clauses.

OFFICE

*Binnensteenweg 240 C6
2530 Boechout/Antwerp
+32 495 22 14 71
office@heuvelmans-interiors.com

WAREHOUSE

*Bervoetstraat 55A
2000 Antwerp
+32 3 345 06 84
warehouse@heuvelmans-interiors.com

* appointments only

WWW.HEUVELMANS-INTERIORS.COM